



2024 ANNUAL REPORT



A LETTER FROM OUR EXECUTIVE DIRECTOR

Dear Friends,

In late 2024, I stepped into the role of Executive Director but my journey with Hands On Hartford began over 18 years ago. In that time, I've witnessed the quiet power of this work: how a meal, a bus pass, a safe space, or a place to call home can restore dignity and hope.

This past year was among the most challenging, and inspiring, I've ever experienced. Amid rising costs, housing shortages, and growing need, our team responded with compassion, creativity, and an unshakable commitment to our mission. The resilience of those we serve and those who serve fuels my belief in what's possible.

Because of your support in 2024, we:

- Provided essential food, shelter, and basic needs to over 7,000 individuals and families
- Expanded mobile outreach to reach those unable to come to us
- Launched a new family stability program focused on long-term impact
- Strengthened partnerships to respond more quickly and holistically

These milestones are more than numbers. They represent moments of care, trust, and transformation; one interaction at a time. I've seen clients take their first steps toward stability, volunteers go above and beyond, and staff show up with deep empathy and strength. We remain rooted in care for the community we serve.

As I begin this new chapter of leadership, I bring with me everything I've learned from delivering as well as overseeing programs and services, that real change happens through relationships and that none of this is possible without a caring community like you.

Thank you for standing with us in 2024. The following pages of this Annual Report reflect all that you've made possible. I'm honored to lead us into what comes next and excited for all we'll build together.

With heartfelt gratitude,



Janet P. Bermudez
Executive Director



OUR MISSION:

Hands On Hartford, in partnership with others, strengthens community in Hartford by responding faithfully to people in need through programs that change lives and renew human possibility.

Board of Directors - 2024

Cynthia Bates - Board Chair
Thomas Kainamura - Vice Chair
Sharon M. Ware - Secretary
Michael Tetreault - Treasurer
Harry Amadasun Jr.
Nichole Berklas
Marc Berube
Lisa Cameron
Marybeth Cardin
Nicole Grant Yonkman
Katonya Hughey
Brian Neary
Angela Nelson
Thais Ortolaza
Vinod Sukhraj
LaToya Tyson
Kelvin Young

Friends of Hands On Hartford - 2024

Beth Ferrari (co-chair)	Janet Hundley
Donna Manocchio (co-chair)	Jay Krusell
Dick Allen	Lorraine La Vigne
Karen Bailey-Francois	Jane Lennox
Peter & Cathie Benner	Aida Mansoor
Tina Bobbitt	Jim Palma
Tracie Brown	Nitza Rivera
Leroy Butler	Bobbi Schmidt
Sue Chatfield	Phil Schmidt
Helena Carvalho	Hope Vath
Alice Ferguson	Maria Ward
Ruth Fitzgerald	Stephen Ward
Helen Frye	Pam Wood
Bryan Hooper	

2024 Staff Listing*

Executive Director - Janet Bermudez

Homeless Prevention,

Outreach, Day Program &

Food Access

Stephanie Boyce, Director
Christofer Cermola
Macklin Cosgrove
Angel Diaz
Julio Espinoza
Rodrigo Giraldo Salvator
Loyda Hernandez
Stache Jones
James Robinson
Danielle Soto
Jennica Torres
Dawn Tyson
Kadijah Williams

Supportive Housing

Program

Abbie Kelly, Director
Bianca Almanzar
Christian Brooks
Matthew Buzzeo
Jennifer Chamorro
Trevonn Coleman
Gilberto Gonzales
Jovanie Gordon
Jacyn Green
Reginald Miller
Liz Pantoja
Angelic Smith
Pauline Thomas
Matthew Thornton

Partnerships & Support

Donna Colliton, Director
Brianna Boirie
Kelly Dougherty
Kian O'Connor
Doug Sacks
Kate Shafer

Finance, HR &

Administration

Carlos Cuevas
Venus Dickson
Craig Hazel
Kimberly Joy
Rosemary Rainey
RaShane Sands
Kim Zajac

Gather55 Restaurant

Rob Maffucci, Director
Julianne Alice
Alex Cotto
James Edwards
Andrea Fleming
Lorenzo Garcia
Clifford Green
Crystal Jenkins
Cristina Meza
Raymond Ortiz
Molly Reynolds
Karl Robinson
Jeremy Williams

*As of December 31, 2024

For most of 2024, Barbara A. Shaw served as the Executive Director of Hands On Hartford. Barbara retired in November 2024, following 11 years of dedicated and impactful leadership. We extend our heartfelt thanks to Barbara for her unwavering commitment and many contributions to our organization.

PROGRAM REPORTS

The 2024 program reports presented in the following pages touch on the highlights of each program. We are always eager to share more about our services and the impact they have on this community and invite our readers to connect with us to find out more

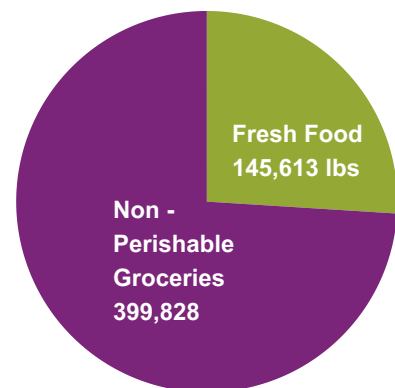
MANNA COMMUNITY PANTRY



Our Community Pantry continues to provide participants with nutritious grocery options. Groceries include non-perishable staples, bread, milk, eggs, fresh produce, and frozen meat (including halal options). During their monthly visits, participants may also select from a range of toiletry items and children's books. Twice a week during their school year, student nurses from the University of St. Joseph provide free blood sugar tests and blood pressure checks in our Community Pantry.

2024 IMPACT

- * Our Community Pantry served an average of 1,010 households per month, a 15.95% increase over 2023, and the highest monthly average in our history.
- * An estimated 545,441 lbs. of food was distributed through our Community Pantry, of which over 26% was fresh food & dairy.



This continued growth reflects both the increasing need in our community and the trust families place in our Community Pantry as a reliable, respectful, and health-focused resource.

BACKPACK NUTRITION PROGRAM

Our Backpack Nutrition Program continued to serve as a vital support for Hartford students facing food insecurity. Each week, enrolled students received backpacks filled with easy-to-prepare meals, snacks, and drinks, ensuring access to nourishing food beyond the school day.

PROVIDING NOURISHMENT

This year, we were pleased to provide students with fresh apples and oranges in place of fruit cups, improving the nutritional quality of the food provided and promoting healthier eating habits.



5,985

Backpacks distributed



60,164

total lbs. distributed



Andrew May, a longtime Hands on Hartford volunteer, prepares the weekly Backpack delivery by loading backpacks and fresh fruit into our Box truck.

FOSTERING WELLNESS

Beyond meals, the Backpack Program focused on overall wellness. In backpacks, we included informational sheets featuring dental health tips, nutrition advice, healthy recipes, and more, helping to foster lifelong healthy habits.

226 Students

were enrolled in for the 2023 - 2024 school year (as of June 2024)

231 Students

were enrolled in the Backpack Nutrition Program for the 2024 - 2025 school year (as of June 2025)

ENHANCEMENTS

In addition to their weekend food items, students received a variety of enhancements in their backpacks throughout 2024.

Enhancements included:

- Cold weather accessories (hats, mittens, etc.)
- School supplies- including Hispanic Heritage Month and Juneteenth themed supplies
- Dental health kits
- Pre-potted flowers

GATHER55 DAY RESTAURANT



At Gather55's Day Restaurant, we remain committed to offering a welcoming space for all, regardless of one's financial status. In 2024, we focused on continuing this mission while also making strategic decisions to strengthen our foundation for the future.

We introduced a new, thoughtfully-designed tiered menu that allows guests to choose from three price points: \$3, \$5, or the posted menu price, depending on their financial situation. This change was part of a broader commitment to maintaining the restaurant's financial health without compromising our values of accessibility and quality.

For those who are unable to contribute monetarily, we have continued to offer the opportunity to volunteer in exchange for a meal. Whether washing dishes, serving coffee, or busing tables, our volunteers have been an integral part of the Gather55 community.

Our on-the-house meal vouchers remain available to anyone who is unable to volunteer or pay for their meal. These vouchers allow individuals to enjoy a nutritious, delicious meal without worry or judgment. Whether facing a temporary setback or experiencing ongoing hardship, our goal is to make sure that every person who walks through our doors leaves with a full stomach and a sense of dignity.

7,399

volunteer meals served

4,401

voucher meals served

GATHER55 EVENING RESTAURANT

In 2024, Gather55's Dinner service expanded its offerings to include catering, private functions, and exciting pop-up events including a special Mother's Day brunch and a Beer & Bacon Dinner in collaboration with Back East Brewery. As always, we continued our commitment to the community by reserving tables for diners who are unable to pay, ensuring that everyone has access to a fine dining experience.



Picadillo Empanadas
Ani Robaina



Stuffed Eggplant and Kale
Chef Tim East



Campfire Cake
Chef Tyler Anderson

2024 GATHER55 GUEST CHEFS

Each month, we invite a chef from a local restaurant to add special menu items reflecting their unique culinary focus.

- **January:** Allison Frey, Henry Provisions
- **February:** Adam Greenberg, Sparrow Pizza Bar
- **March:** Joe Cusano, Le Mazet.
- **April:** Zach Shuman, Locals 8 Hospitality
- **May:** Tim East, Union Kitchen
- **June:** Chris Sheehan, Max Downtown
- **July/August:** Tom Kaldy, The Charles
- **September:** Ani Robaina, Ani's Table & Marketplace
- **October:** Dante Cistulli, Zephyr's Street Pizza
- **November:** Israel Sanchez, Frida West Hartford
- **December:** Haydar Sharipov, City Kebab



Gather55 participated in the
2024 Hartford Taste Festival



Gather55 now offers catering for private
functions - both onsite & offsite

SHARED KITCHEN

By the end of 2024, 67 food businesses had joined our licensed commercial kitchen. In addition to providing a place for small and emerging businesses to create, launch, and scale their businesses, we also continued to provide information on licensing, resources and business workshops.

Since 2020, 35 Shared Kitchen members have received business subsidies through the City of Hartford's Community Development Block Grant (CDBG) program. This funding has helped to remove financial barriers for small businesses, allowing them to focus on growth and sustainability.

SPOTLIGHT: SHEENA SALVADOR - VEEG MY EATS

In February 2024, Sheena Salvador approached Hands On Hartford to launch Veeg My Eats, a business focused on vegan baked goods. Her journey reflects the full spectrum of support offered through our Shared Kitchen Program:

- Sheena qualified as a CDBG participant, which provides shared kitchen membership and access to time in the kitchen.
- She enrolled in the Food Incubator Program, which is led by our Hartford Culinary Collaborative partner, reSET and supported through CDBG funds.
- She became a popular weekly vendor at several Farmer's Markets, and became a biweekly vendor at Gastropark in West Hartford.
- We referred Sheena to a selective mini-MBA program offered through a collaboration between Babson College and Santander Bank to which she was accepted.
- Sheena capped off her successful year by being accepted as a vendor at the Big E!



2024'S FEATURED ENTREPRENEURS AT GATHER55

In 2024, the growing impact of our Shared Kitchen program was showcased at Gather55, where five of our kitchen members had their products featured or used as key ingredients in the restaurant's offerings. This milestone reflects both the quality and creativity emerging from our Shared Kitchen, as well as their increasing visibility in Greater Hartford's food scene.

- Frank Finelli, **Doughwich** – indulgent ice cream cookie bars that blend nostalgic comfort with gourmet flair.
- Nicola Poplin, **Pop's Guac** – signature guacamole, made with bold flavors and fresh ingredients
- Anthony Weston, **Four Finger BBQ Sauce** – bold and smoky barbecue sauces with authentic slow-cooked taste.
- Tanya Owen, **Ladybugs Breadstuff** – an array of baked goods that bring warmth and tradition to the table.
- Duke Essiam, **Itskelewele31** – refreshing honey-based iced teas

DAY PROGRAM

Open four days and one evening each week, our Day Program continued to provide immediate support, trusted guidance, and a compassionate community space for individuals in need. In 2024, the program made significant strides in expanding access to health services, increasing engagement with critical resources, and responding to the growing needs of our guests.

Navigation & Resource Support

Our Day Program Specialist provided **2,610** navigation services, a **50% increase from 2023**.

683 unduplicated guests received navigation services, of whom **40%** were experiencing homelessness.

Services included:

- Housing and employment assistance
- Help with securing IDs and birth certificates
- SNAP benefit applications
- Referrals to internal and external resources
- Access to warming centers, shower locations, and more

Health Services

To make essential healthcare even more accessible for our community, we made medical care and health resources available in our Day Program. These services help individuals stay healthier, address urgent needs, and connect with long-term support. Guests of our Day Program accessed health services **1,323** times in 2024, an **86% increase from 2023**.

Services included:

- Bi-monthly Hartford HealthCare Neighborhood Health Clinics
- Student nurses from the University of St. Joseph offered blood sugar & blood pressure checks
- Weekly SMART Recovery meetings (InterCommunity Health Center)

This continued growth reflects both the increasing need in our community and the trust families place in the MANNA Community Pantry as a reliable, respectful, and health-focused resource.



50%

Increase in guests accessing navigation services*



86%

Increase in guests accessing health services*

*as compared to 2023



3,520 Meals

served at the Day Program's free Monday night community dinners



2,594 Risk Reduction Items

were distributed to guests in our Day Program

NEIGHBORHOOD SERVICES

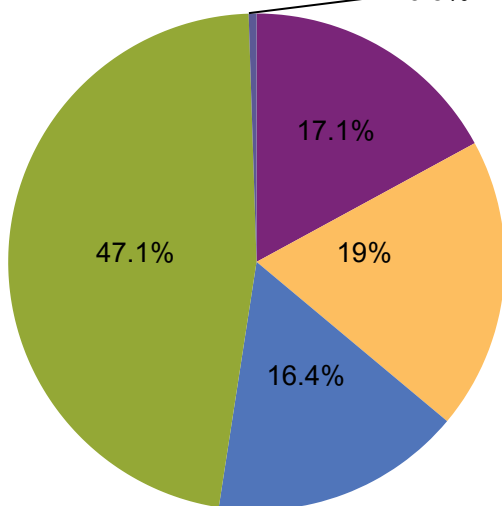
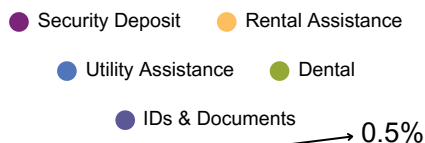
As financial insecurity deepened for many in our community, our Neighborhood Services Program played an essential role in helping Hartford residents stay safely housed. We responded to this growing demand with rental and utility assistance, security deposits, and referrals to critical resources.

In response, our Neighborhood Services Program provided \$240,251 in financial assistance to help Hartford residents maintain stability and avoid homelessness.

Of that total, \$113,061 was allocated to dental assistance, an urgent and often overlooked need. This funding ended midyear when our community partner chose to begin administering the program directly.

Every household served is a reflection of our commitment to stepping in early, easing financial burdens, and helping neighbors stay safely housed.

DISTRIBUTION OF AMOUNTS AWARDED
BY SERVICE TYPE IN 2024



NUMBER OF HOUSEHOLDS ASSISTED IN 2024



648

households accessed
navigation services

243

households received
financial assistance

\$240,251

distributed in financial
assistance

HOMELESS OUTREACH

FROM ENCAMPMENTS TO HOUSING

In 2024, in the face of rising unsheltered homelessness, we joined a powerful collaboration to lead with compassion, dignity, and results.

Through Journey Home's Compassionate Connections to Housing initiative, our team, alongside fellow service providers, municipalities, and housing authorities worked to transform the way our region responds to homelessness.

This innovative, housing-first model prioritizes direct engagement with encampment residents and offers meaningful pathways to permanent housing. It's a stark shift from the costly and ineffective cycle of encampment clearings, and it's working. Over the past year, 100% of our unsheltered neighbors engaged through this effort accepted housing, with 47 individuals moving into stable homes in a median of just 44 days.

Hands On Hartford is proud to be part of this movement, replacing displacement with dignity, and temporary fixes with lasting solutions.

935*

Outreach Team
engagements

41

households matched
to housing

19

households placed in
permanent housing

2,962

risk reduction items
distributed

**duplicative count; individuals may have been engaged multiple times*



Our Homeless Outreach Team is out in the community 6 days a week, ensuring our most vulnerable neighbors are connected to resources.

SUPPORTIVE HOUSING PROGRAM

At any given time in 2024, our Supportive Housing Program provided intensive case management services to 110 people- many of whom are experiencing or at risk of homelessness and facing challenges such as mental health concerns, substance use disorders, and chronic health conditions, such as HIV/AIDS. We also provide light-touch drop-in services for 32 households at George Beach Apartments

COMMUNITY CONNECTIONS

Every year, we distribute a consumer satisfaction survey, developed by the Department of Mental Health and Addiction Services (DMHAS), to all tenants receiving supportive housing services.

Offered in both English and Spanish, the survey gathers valuable insight into how tenants perceive the services provided and their overall quality of life.

Recent survey results highlighted a recurring concern: many tenants felt disconnected from their community and experienced social isolation. In response, we took action, creating a new position aimed to bring more social, recreational, health and wellness activities to all our housing tenants.



Trevonn Coleman

Community Housing & Activity Coordinator

Activities offered to tenants in 2024 included, among others:

- **Seasonal Social Events:** Monthly cookouts, quarterly birthday celebrations, and annual holiday gatherings.
- **Excursions & Experiences:** Trips to Mystic Aquarium, a Yankees game in New York, Rhode Island's WaterFire festival, and the Big E.
- **Ongoing Activities:** Nature walking group, concerts and fireworks in the park, ice cream socials, arts & crafts, mindfulness workshops, and monthly movie outings.
- **Educational Engagement:** Legal presentation on advanced directives (in partnership with Greater Hartford Legal Aid).
- **Advocacy:** Tenants participated in state-level advocacy for nonprofits and AIDS awareness at the Legislative Office Building.

Introducing these activities have helped tenants across different programs come together, build social skills, and access resources that enrich their daily lives.

Through thoughtful programming and tenant-informed solutions, our Supportive Housing Program continues to create a stronger, more connected community; one where every person is supported, seen, and empowered.

COMMUNITY GARDEN

Our Community Garden thrived in 2024, thanks to the incredible support of Voya Financial, who sponsored the garden and planted everything to launch our growing season.

We harvested an estimated 760 pounds of fresh produce, all of which went directly to our Community Pantry, Gather55, and Supportive Housing Program.



We grew a variety of produce, including: tomatoes, zucchini, herbs, and lots of peppers (bell, cubanella, poblano, serranno, shishito, and jalapeño!)

We wouldn't have had such a plentiful harvesting season without our dedicated volunteers. In 2024, our Community Garden was supported by a total of 45 volunteers who contributed a combined 310 hours of volunteerism.

At the end of the season, we were proud to be awarded the Hartford Urban Gardeners Society Award from Knox Inc.. This award recognized our contributing to the beautification of Hartford's neighborhoods and improving the quality of life in our city.



FACES OF HOMELESSNESS SPEAKERS' BUREAU

The Faces of Homelessness Speakers' Bureau travels through the state of Connecticut to share their own experiences of homelessness, dispel myths, educate audiences on the causes of homelessness, and encourage others to get involved in making positive changes in the community.

In 2024, we hosted 13 speaking events which reached over 1,400 audience members.



Rosemary Rainey, Faces of Homelessness Speaker

CONNECTICUT FOODSHARE'S WALK AGAINST HUNGER

In 2024, we continued our annual tradition of participating in Connecticut Foodshare's Walk Against Hunger. This meaningful event brings together individuals and organizations across the state who are dedicated to making a difference.

100% of the funds we raised supported our Community Pantry and Backpack Nutrition Program, helping us provide vital food resources to our Hartford neighbors. We're grateful to everyone who walked alongside us, donated, and continues to support our mission year after year.



COMMUNITY ACTION FOR A HUNGER-FREE HARTFORD

In July 2024, as an affiliate of the Global Points of Light Network, we partnered with Levo International for a hands-on service project where 150 CarMax volunteers assembled 25 hydroponic systems.

These systems will yield 10,000 to 20,000 pounds of fresh produce annually for Hartford's North End, a neighborhood with limited access to affordable, fresh food.

COMMUNITY MEALS

We continued hosting free holiday meals in 2024, including New Year's Day, Easter, Memorial Day, 4th of July, Labor Day, Thanksgiving, and Christmas.

Thanks to the support of generous sponsors, dedicated volunteers, and staff, we were able to serve a total of 2,331 meals, ensuring that no one had to spend the holidays alone or without a warm meal.



VOLUNTEER RECOGNITION EVENT

In April of 2024, we gathered to celebrate our volunteers who make so much of the work we do possible.

We honored Cindi Bates with the Paul Bobbitt Award and RJ Cermola with the R. Regner and Carolyn S. Arvidson Exemplary Volunteer Award. We also recognized Avon Congregational Church, Pratt & Whitney, East Hartford High School, and superstars Paula Mitchell, Curtis Thomas, Steven Fischer, Sabrina Wright, Rafael Rodriguez, and Jill Hammerberg.



TURKEY DISTRIBUTION

At our annual Turkey Distribution Event, we were able to provide Thanksgiving meals to 352 households who were selected through a lottery system in our Community Pantry.

Each family received either a turkey or chicken, including halal options, along with a generous assortment of traditional Thanksgiving sides. Thanks to the support of our volunteers and community partners, we were able to help families celebrate the holiday with dignity, warmth, and a full table.

TOY SHOPPE

2024 marked our 32nd year partnering with Avon Old Farms School for our annual Toy Shoppe event.

Staff and volunteers kept children entertained with games and crafts while their parents visited our secret toy room, selecting two toys for each of their children. Santa & The Grinch both stopped by too!

113 families joined us at the event, allowing us to provide 297 children with gifts for the holidays.

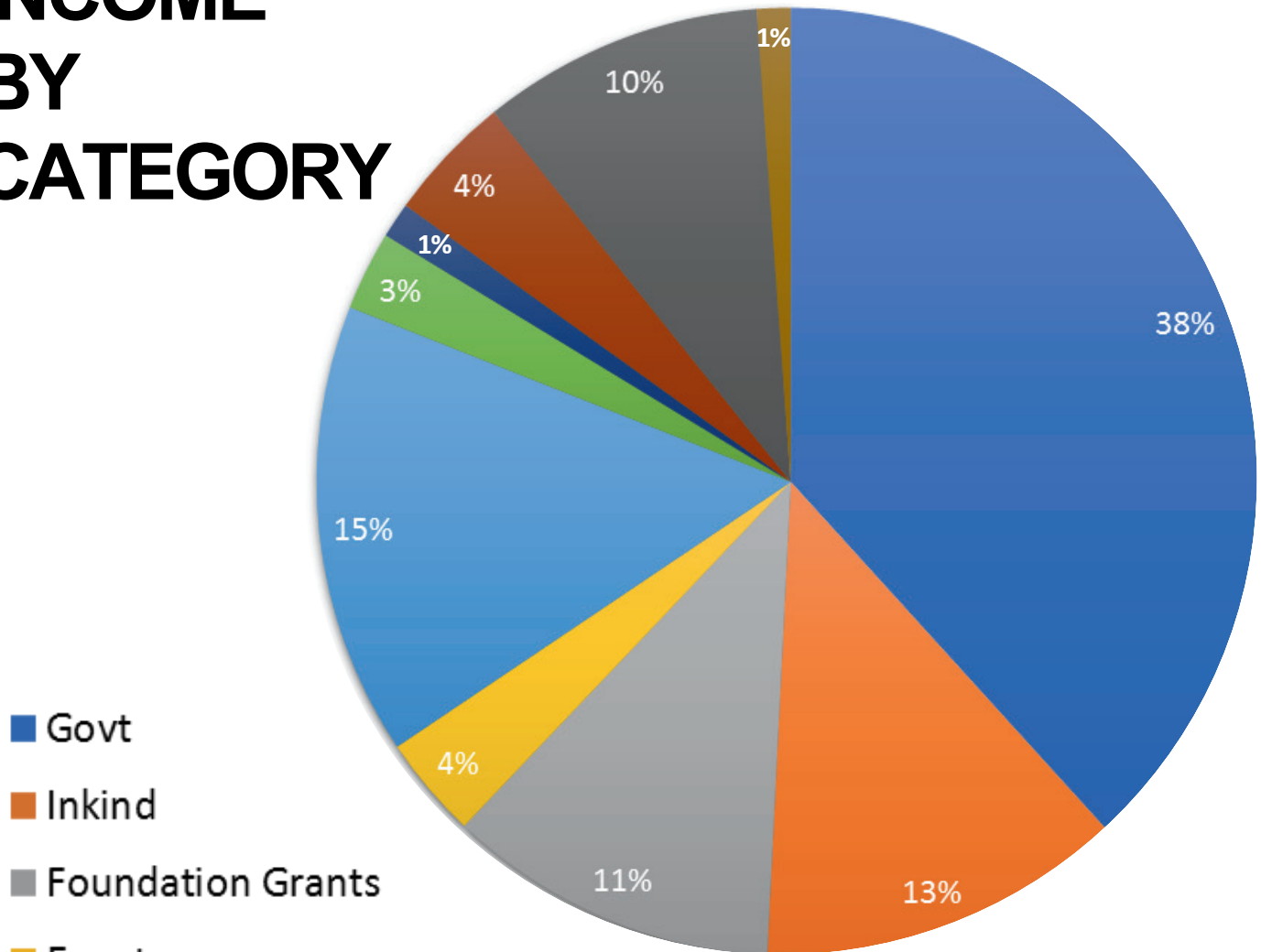


2024 FINANCIAL REPORT*

*In 2024, Hands On Hartford was the steward of gifts, grants, and fees in the amount of \$6,548,781 (unaudited at the time of printing this report).

These charts illustrate the sources and distribution of support.

INCOME BY CATEGORY



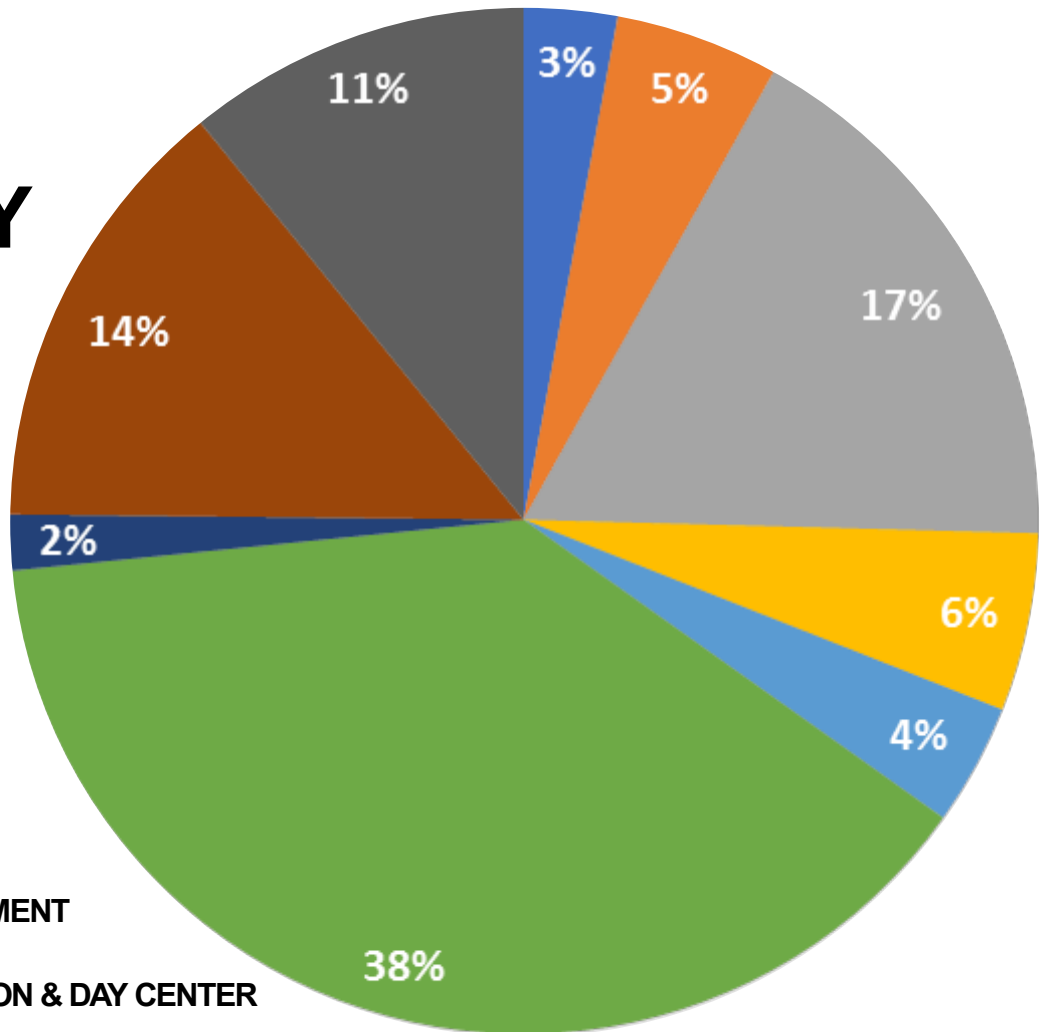
- Govt
- Inkind
- Foundation Grants
- Events
- Private Donations
- Religious (includes client asst \$)
- Corporate
- Contract Services
- Program Income
- Misc - Interest

2024 FINANCIAL REPORT*

*In 2024, Hands On Hartford was the steward of gifts, grants, and fees in the amount of \$6,548,781 (unaudited at the time of printing this report).

These charts illustrate the sources and distribution of support.

EXPENSE BY CATEGORY



- COMMUNITY ENGAGEMENT
- HOMELESS PREVENTION & DAY CENTER
- COMMUNITY PANTRY
- BACKPACK NUTRITION
- HOMELESS OUTREACH
- HOUSING
- SHARED KITCHEN
- GATHER55 DAY SERVICES
- GATHER55 NIGHT SERVICES

2024 Financial and In Kind Support

Grant funding and donors are listed in categories based on donor characteristics. Gifts made through donor advised funds held at commercial institutions may be reported as gifts made by the fund advisors.

Government Funders

Emergency Food and Shelter Program (FEMA)
HUD Housing Opportunities for Persons with AIDS, through the City of Hartford and through CT Department of Housing
HUD Community Development Block Grant, through the City of Hartford
HUD Continuum of Care, through Journey Home CT
HUD Emergency Shelter Grant, through Journey Home CT
State of Connecticut, Department of Mental Health and Addiction Services (direct funding, and through Journey Home CT and Mercy Housing and Shelter Corporation)
State of Connecticut, Department of Housing
State of Connecticut, Department of Social Services
State of Connecticut, Office of Policy and Management
US Department of Agriculture
West Hartford Housing Authority

Foundations and Grant Funders

84Vikings4Good
Ahearn Family Foundation; The
Aldo DeDominicis Foundation
Beatrice Fox Auerbach Endowed Fund at Hartford Foundation for Public

Giving
Avangrid Inc.
Barnum Foundation for Life
Berkshire Bank Foundation, Inc.
J. Walton Bissell Foundation
C&S Wholesale Grocers, Inc.
Charitable Society in Hartford
CLSJ Foundation, Inc.
Coleman Family Foundations
Connecticut Foodshare
Ensworth Charitable Foundation
Evantash Family Charitable Trust
Eversource Energy Foundation
Farmington Bank Community Foundation
Stanley D. and Hinda N. Fisher Fund
Harry E. Goldfarb Family Foundation Fund at Hartford Foundation for Public Giving
Greater Hartford Community Foundation
Hands On Hartford
Endowment Fund at Hartford Foundation for Public Giving
Hanover Insurance Group Foundation
Hartford Foundation for Public Giving
Hartford HealthCare
Hartford Steam Boiler
Hartford Wolf Pack Community Foundation
HBRA Charitable Foundation
Henry Hall Charitable Trust
Maximilian E. and Marion O. Hoffman Foundation

Innovation Fund for Hands On Hartford at Hartford Foundation for Public Giving
Ion Bank Foundation
Jewish Community Foundation of Greater Hartford
S. A. Johnson Family Fund
Kelly Family Foundation
Catherine M. Kornas Fund
LAZ Parking Charitable Foundation, Inc.
Lincoln Financial Foundation Inc.
John R. and Margaret H. Lindberg Fund
Local Initiatives Support Corporation
M&T Charitable Foundation
Max Cares Foundation
William and Alice Mortensen Foundation
Munich Reinsurance America
National Trust for Historic Preservation
Norbert H. Hardner Foundation
Owenoke Foundation
Charles Nelson Robinson Fund
Rusche Epperly Family Trust
SBM Charitable Foundation, Inc.
Sisters of Mercy/Mercy Ministry Corporation
Swindells Charitable Foundation Trust
Tierney Family Charitable Fund
TJX Foundation
Town Fair Tire Foundation
Trustees of the Warburton Chapel
Turner Family Foundation
Unico Foundation, Inc.

Herbert A. Vance, Jr. Charitable Fund
Vdel Fund
Vermont Community Foundation
Walker Community Fund
Webster Bank
Woodcock Noorstrand Fund
Workers Compensation Trust
Harold L. Wyman Foundation

Faith Groups

Asylum Hill Congregational Church
Avon Congregational Church
Center Church / The First Church of Christ in Hartford
Central Baptist Church, Hartford
Christ the King Church
Church of the Good Shepherd, Hartford
Emanuel Lutheran Church, Hartford
First Baptist Church of West Hartford
First Church in Windsor
First Church of Christ Congregational, Glastonbury
First Church of Christ Congregational 1652
First Church of Christ Congregational, West Hartford
First Church of Christ, Simsbury
First Congregational Church, Bloomfield
First Congregational Church of South Windsor
First Presbyterian Church, Hartford

Flagg Road United Church of Christ
 George Affleck Trust
 Gilead Congregational Church
 Immanuel Congregational Church, Hartford
 JT Connect
 St. John's Episcopal Church, Vernon
 St. Patrick's Church, Collinsville
 Vox Church
 Westminster Presbyterian Church, West Hartford

Businesses, Schools, and Community Groups

Actup Theater
 Aetna, a CVS Health Company
 American Eagle Financial Credit Union
 Avangrid
 Bloomfield Electric Company
 Capital Region Development Authority
 CarMax
 Center for Leadership and Justice
 CGI Technologies and Solutions Inc.
 Children's Law Center
 Choate Rosemary Hall
 Colley Asset Management, Inc.
 Community Bag Program
 ComTec Solutions LLC
 Connecticare, Inc.
 Connecticut Children's Medical Center
 Connecticut Foodshare
 Connecticut State Colleges and Universities
 Constitution Group of Wells Fargo Advisors
 Construction and General Laborers
 CREC
 Crosskey Architects LLC
 Curaleaf
 Domino's Pizza LLC
 Fiducient Advisors

Gaffney, Bennett and Associates, Inc
 Garelick Farms Dairy
 Farmers of America
 Greater Hartford Association of Realtors
 Greater Hartford Twilight Baseball League
 Griffith Academy Inc.
 Hall High School
 Hartford HealthCare
 Hartford Hospital OR
 Hip Hop for the Homeless
 Housing Enterprises Inc.
 I.T. Resources, LLC
 ImmaCare, Inc.
 Insa
 Jackson Laboratory for Genomic Medicine
 Journey Home
 JR Heating & Cooling, LLC
 Law Offices of Mark E. Salomone & Morelli
 Leadership Greater Hartford
 Loomis Chaffee School
 Marsh & McLennan Companies Matching
 Mercy Housing and Shelter
 Meritage Financial Strategies
 Nassau Financial Group
 NBT Bank
 PeoplesBank
 PNT Data Corp.
 Points of Light
 RBC Wealth Management
 Rock Voices Choir
 Shipman & Goodwin, LLP
 Smith Brothers Insurance, LLC
 Sonitrol New England
 South Park Inn
 Stanley Black & Decker
 Stop & Shop Community Bag Program
 Swift Textile Metalizing LLC
 Talcott Financial
 Thrivent Financial
 Town of South Windsor
 Travelers
 University of Connecticut
 University of Hartford
 Virtus Investment Partners, Inc

Voya Financial
 West End Civic Association
 Whittlesey
 Workers' Compensation Trust
 Zezzo House

Business Matching Gifts

Amica Companies Foundation
 Arch Insurance Group
 Avangrid
 Avna
 Bank of America
 Bristol-Myers Squibb
 Cigna
 Coverys
 CVS Health
 Empower
 Genentech
 Google
 Lego Community Fund
 LPL Financial
 Marsh & McLennan Companies
 MassMutual Financial Group
 MUFG Union Bank
 Munich Reinsurance
 Post University
 Raytheon Technologies
 Stanley Black & Decker
 Symetra
 Talcott Financial
 The Hartford
 Travelers
 UBS
 VOYA Financial

Individuals (including donor advised fund advisors and registered walkers supporting Hands On Hartford in CT Foodshare's Walk Against Hunger)

Kevin & Marsha Adams
 Paige Adams
 Paul Adel
 Efrain and Olga Agosto
 Mohammed Ahmed
 Diane Albert
 Philip Yeagle & Arlene Albert
 Greg Alexander
 Jalil Alidoost

Carol & David Allen
 Richard Allen
 Bianca Almanzar
 Ruth Alvarez
 Harrison and Catherine Amadasun
 Natasha Amadasun
 Harry Amadasun Jr.
 Maria Andrade
 Gregory Andrews
 Barbara & Ray Andrews
 Balkrishna Annigeri
 Dianne Antos
 Leigh Appleby
 Daniel Archambault
 Rob and Laura Arena
 Elizabeth Arevalo
 Frances Argay
 Michael Aron
 Nathaniel Aronson
 Neelam Arora
 Sebnem Atabas
 Meghan Atwood
 Awilda Ayala
 Roseanne Azarian
 Kim Babins
 James and Karen Bachman
 Rachel Bader
 Karen Bailey-Francois
 Jay Baker
 Martha Baker
 Priya Balasubramanian
 Colin Bannister
 Joseph Barber
 Edward Barlow
 Jennifer Barr
 Morven and Peter Barwick
 Nancy Baseel
 Sara Batchelder
 Jonathan Russell and Cindi Bates
 Wanda Bates
 Bryanna Bauer
 Bill Baysinger
 Michael Beattie
 David & Bonnie Beaulieu
 Perry Becker
 Nancy Becker
 David and Kathleen Becker
 St. Germain
 Tracy Beckley
 Sheryll Bedingfield
 Ken & Beverly Bedini

Lorie Beekley	Courtney Bourns	Annette Carter	James and Marian Cox-
Jerome & Lois Begley	Corinne Bowie	Scott Carter	Chapman
Ronit Bendett	Stephanie Boyce	Linda and Stephen Caruso	Robert Coykendall
Steven Benedetto	Patricia Boyer	Linda Castiglione	Jennifer Craig
Diane Benner	Eric Bradley	Samantha Castillo-Davis	Clinton Crawford
Peter and Catherine Benner	John Brady	James and Constance	Dorothy Cresswell
Victoria Bensussan	Charles Brandi	Castner	Sarah Cruz
Judith Benton	Robert & Cindy Braunlich	Kristy Cataloni	Eva Csejtey
Denise Berczik	Diane Braunschweiger	Mark and Lauren Cattel	Christen Cuniowski
Sharon Bergman	Timothy and Deborah	Melanie Cecarelli	Candace Cunningham
Anat Bergner	Brennan	Christofer Cermola	Laurie Curran
Nichole Berklas	Tom and Jeanne Bright	Sasi Chandrasekaran	Greg Curtin
Sandra Berkner	Chester & Glenna Brodnicki	Sam Chang	Gael Curtin
Susan Berman	Sharon Brooks	Meg Chaplin	Patricia Cusimano
Janet Bermudez	Michael Brooks	Audrey Chapman	Geraldine Daly
Marc Berube	Karen and Tim Brown	Stephen Chapron	Barbara David
Miles Wickless and Lori	Tracie and Troy Brown	Nolene Charles	Cassandra Davis
Beste	Virginia Brown	Jared Chase	Juan De La Rosa Esquivel
Maura Bey	Roberta Brown	Susan and Frank Chatfield	Nancy DeCamara Maglio
Kristin Bey	Robyn Bruhin	Denise Chicoine	Stephanie & James
Carolyn Bighinatti	Sandy Brunelle	Eileen Chiou	DeFilippo
Blanche Capilos and David	Grace Buabeng	Kysa Christie	Sarah DeGiovanni
Biklen	Barbara & David Buddington	Cara Christie and Jar	Joel DeJong
Heidi & John Bikowski	Roger and Judith Bunker	Lampard	Kelly & Stacy DeKeyser
Samuel and Barbara Billings	Kimberly Bunton	Patricia Christopher	Sheila DeLutrie
Kelly Bilodeau	Kathryn Burk	Jane Ciarleglio	Marie Dempsey
Christine and Anthony	Tonya Burke Rodriguez	Kristina Cimini	Karen Denowitz
Bivona	Mary Burkhardt	Jonathan Clark	Nancy DePalma
Philip Black	Abbey Burnell	Jessica Coelho	Kaitlyn DePaolo
Jason Black	Gerry Maine and Linda	Barbara Coffin	Gabriella DePino
Annette Blackwood	Burns	Ann & Richard Cohen	Jillian D'Eramo
Candis Blades	Niklaus Buskirk	Susan Colleran	Robin Deutsch
Lynda and Warren Blessing	Karen Byrne	Charles and Jessica Colliton	Laurie Devaney
Carolyn and George Blick	Carolyn Bystrak	Andrew Colliton	Wendy Devine
Eric Block and Stacey	Ritchard & Mary Cable	Donna and Kenneth Colliton	Craig and Anne Diamond
Bobbitt	John Callahan	Joyce Comer	Srianee Dias
Toby Bobbitt	Lisa & Matt Cameron	Ann and Dan Conable	Molly DiGrazia
Tina Bobbitt	Lily Cameron	Anne Condon	Elizabeth Doerfler
Michael & Suzanne Bocchini	Marla Campbell	Ellen Robinson & James	Donna Donegan
John Pickering and Tracy	Stephen Campbell	Condren	Anonymous Donors
Bodine	Michelle Campbell	Thaddeus Bennett & George	Terence Donovan
Brianna Boirie	Ruth Canovi	Connell	Kelly Dougherty
Bernard Bollinger	Kara Capone	Mark Conrad	Ellen Dougherty
Dean and Kathleen Bolt	Mary Beth & Robert Cardin	Michael Contakis	Danielle Douglas-Gabriel
Ann Thomas & Michael	John & Kimberly Cardone	John Corgan	William and Doreen Doyle
Bonzagni	Susan Carey	Lillian Corman	Andrea Bass & Garret Drake
Lisa Book	Marion Carling	Tina Cormier	Richard and Susan Drayton
Joel Booker	Maeleah Carlisle	Heather Corracio	Mara Dresner
Nicole Bornhorst	Victoria Carmona	Jonathan Coss	Susan Driscoll
Judith Borus	Randa and Kevin Carr	Carol Couture	Elaine Ducharme
Alicia Bosse	Annette Carr	Wendy Cowan	Shirley Dudley
Eric Boswell	Hannah Carrigan	Marcia Cox	Teresa Duggan
Michael Bourdeau	Ted and Jane Carroll		Lisa D'Urso

Walter and Terri Dwyer	Gregory Garcia	Brandon Hamilton	Jennifer Horn
Jessica and Scott Eastman	Mary Gillette & Audrey	Maureen Hamilton	Carol Gale & Debra Horn
Richard & Arline Edmonds	Garrett	Richard Hamlin	David Houpert
Jane Edwards	Sirtyra Gary	Maria Hammons	Marshall and Sharan Hovey
Monica Ehrlich	Suzanne Gates	Holta Han	Claude Howard
Joanna Eickenhorst	Jennifer Gaudet	John Hanson	Kristen Hoy
Ellen Eisenberg	Brian and Betsy Gauthier	Jin Hao	Yelena Hrybanau
Judith Eisenberg	Margaret and Mike Genovesi	Rosemary Harding	Cecil Hudson
Diane Ellsworth	Anne Gerard	Jerry Hardison	Rebecca Hudson
Herbert Emanuelson	Phil & Danielle Getzen	Stephen Burner & Margaret	Robert Hugh
Brianna Johnston & Sharron	Reta Giblin	Hardner	Amy Johnston & Mark
Emmons	Dawn Gibson-Brehon	Jonathan Hargreaves	Hughes
Ivie Enagbare	Jeffrey Gilbert	Matthew Harris	Katonya Hughey
Alice Ericson	Todd Girard	Peter and Jennifer Harris	Janet Hundley
Jeri Erman	Laurene Girardin	John and Mary Ann Harris	Jay Hessey and Jill Hurst
Ken Erman	Gary Girouard	Alex Harris	Albert Iemma
Sue Esposito	Michael Gittings	Claudia Hart	Andrea Igdalsky
Diana Evans	Rebecca Glenn	Paul Hartung	Kelly Ilvento
Anne Farnum	Chris & Deb Goff	Perry Hasson	Jon Ingram
Carl Coelho and Elaine Fay-	Christopher and Dara Goings	Meghan Hayden	Debrah Welling & Jack
Coelho	Marcia Goldreich	Patrick and Susan Hayes	Intrator
Kendra Dowd and David	Allie Gonzalez	Elizabeth Heelan	Ojala Naeem and Rohaan
Fechtor	Stacey Gonzalez	Julie Helkenn	Iqbal
Joanne Feeney	Charlotte Goode	Margaret and Graham Heller	John Emery Istvan
Anthony Feit	Kenneth and Kathie Goode	Wendy Helmkamp	Robert and Susan Izard
Beth and Phil Ferrari	Evan and Sarah Goodness	Anteia Henes	Nancy Jacobs
Julie Fewster	Dennis Gordon	Robert and Rebecca	Heather Jacobson
Morgan Fey	Marlene Gordon	Henricks	David Jalbert
Dawn Filippa	Lisa Gorham	Nikeisha Henry	Matthew Pellowski and
Nellie Filippopoulos	James Gorman	Jassette Henry	Michelle Jarvis
James & Susan Finnegan	Dala Grabowski	Lisa Henry-Kerr	Valerie & Mathew Jasinski
Sr. Beth Fischer	Shante Grady	Aaron & Martha Hess	Dectora Jeffers
Margaret Fiore and Steven	Richard Grandinetta	Karen Heudorfer	Elizabeth Johnson
Fischer	Nicole Grant Yonkman	Joseph Hewes	Gina Johnson
Eugene and Norma Flynn	Susan Grassman	Andrew Greenhalgh &	Kelly Johnson
Ann Foley	Brenton and Wendy	Madeleine Hexter	Kimberly Joy
Jill and Walter Ford	Graveley	Nancy Higgins	Frances Juda
Dora Fotino	Alexander Greenough	Kathleen Hindman	Glenn & Carolyn Wilkes
Jane Foxall	Jill and Jeremy Grieveson	Karen Hintz	Kaas
Claudia and Steve Franklin	Rich and Ruth Grobe	Adam & Jessica Hirsch	Charlotte & Dave Kaetzel
Daniel Freess	Shari Guarino	Paul Hiscox	Thomas & Christine
David Frusciante	Melanie Guerin	Andrew Hahn & Cathy	Kainamura
Ann Fry	Peter Gulbrandsen	Hitchcock	Todd & Susan Kalagher
Helen & Henry Frye	Brenda Gurski	Susan Hoben	Michelle Kalis
Michael Fucci	Holly Gustafson	Bonnie Hoddinott	Braden Kattman
Mary Fulton	Wanda Guzman	Michael Hoffman	Marvin and Janet Kay
William English and Tracey	Louis Haberlandt	Craig Holden	Maureen Keating
Funari	Amy Hackett	Lisa Holden	Ethan Keely
Wendy Furniss	David & Sara Hadden	David Holmes	Paul Kelleher
Kristine Gage	Landon Hall	Carol Honeychurch	John Kelly
Noreen Channels and	Brenda Hall	Laurel Hopkins	Abigail Kelly
Donald Galbraith	David & Gail Hall	Shannon Hopkins	David Kelman
Shawn Gale	Pamela Haller	John & Marcia Horan	Bill and Char Kennedy

Betsy Kenneson	Marie Lavendier	Daniel and Ann Martin	Cheryl Morgan
Gail and John Kenyon	Caitlin Lawrence	Therese and Nicholas	Priya Morganstern
Cory Lisabeth Kern	John Layman	Martoccia	Margaret Moriarty
John and Donna Kidwell	Lisa Leamon	Kelley Mathes	Ann Moriarty
Marla Killough	Marjorie Lemmon	John Mathes	Patricia Morris
Josephine Kilty Shaw	Jane Lennox	Stanley Maticka	Mary Lee Morrison
Sheila and James Kimball	Mark Lennox	Richard Matteson	Donna Morrison
Stephen Gryc and Judith	Carolyn Lester	Anthony Matthews	Christi Morrow
King	Lisa Lettieri	Beverly Matthews	Deborah & Kurt Moyer
Anne Stanback and	Heather Levesque	Sarah Matusek	Helen Mulkern
Charlotte Kinlock	Scott Harding and Kathy	Danielle Maxwell	Eliza Mulkern
John Kirklin	Libal	Justin May	Judith Mulkern
David & Janice Klein	Sara Lieberman	Heidi Mazerolle	Christopher Mulkern
Kenneth Kleitz	Jim Lindberg	Cullen McCaffrey	Marie Mulkern
Chris and Jeannie Kmetz	Elizabeth Lindsay	David McCluskey	Alicia Multer
Janet and Dale Knecht	Diane Lipos	Sean McCutchan	Paul Murphy
David Knishkow	Jackie Little	Kevin McEleney	Rose and James Murphy
Mark Drusedum and Molly	Lawrence Little	Colin McEnroe	Dean Nadeau
Knorr	Melinda Lodge	Kate McEvoy	Troy Nagel
Jonathan and Tammy	Richard & Martha Londergan	Robert and Judith McGowan	Kimberly Nardone
Kocienda	Doreen Long	Maria McKinley	Jailene Nazario
Lauren Komrosky	Mark and Tina Loomis	William and Linda McKinney	Jon and Pam Nealon
Jason Koresko	Diane Lopes	Alii McLaren	Brian & Lisa Neary
Lois Koteen	Dinora Lopez	Kathleen McLean	Enid Negron
Melanie Kovitch	Kathryn and Harvey Lord	Setsuko and Robert McNabb	Angela and Russell Nelson
Jennifer Kowitt	Peggy Lorence	Linda Mead	Kirstin Nelson
Dennis Kraemer	Kevin and Maryann Loveland	Andrew Meehan	Patrice Nelson
Venkatachala Krishnan	Nancy Luce	Deborah Mehlman	Dianne and Jonathan Ney
Judith and Allen Kronick	Wayne Luciano	Kathleen Melillo	Lilly Nguyen
Jay & Diana Krusell	Venus Lusk	John Memmott	Saraya Nguyen
Richard and Karen Kubica	Geoffrey Luxenberg	Dennis Menard	Laura and Dean Nichols
Barbara-Jean Kubik	Paula Luxenberg	Michaela Mendelsohn	Brendan Noonan
Rebecca Sielman and	Vicki Lynch	Deb and Peter Meny	Sally Noonan
Charles Kuchenbrod	Jonathan & Gloria Lynch	John Merz	Andrea Nygren
Andrew Kulak	David and Nancy Maclean	Catherine Meyer	Claudia and Howard Oakes
Lois & David Kulas	Juliana Mactaggart	Habiba Mickdad	Ellen and William O'Connor
Roberta and Paul La	Ralph Mandeville	Sharon Migdal	Kian O'Connor
Monaca	David Lewis and Donna	Enid Corash Mikulski &	Beth and Drew O'Connor
Lorraine La Vigne	Manocchio	Michael Mikulski	Mary Lou O'Connor
Laura LaBlanc	Sharon Kelley and Richard	Paula Mitchell	Ashley Oldham
Janet LaCava	Mansfield	James and Jane Mitchell	Veda Oliva
James Laccavole	Elizabeth Mansfield	Matthew Mocarsky	Mechelle Olortegui
Christ Lacher	Yusuf Mansoor	Beth Molloy	Mark Olsen
Marcia Lada	Aida & Reza Mansoor	Heather Molloy	Rocco & Joanne Orlando
Lauren LaDuke	Robert Marchetti	Rosemarie and Peter	Raymond Ortiz
Jennifer Lalla	Christine and Richard	Montagino	Thais Ortolaza
Cheli Lange	Marcks	Elaine Montgomery-Baisden	David Osella
Remilien Laplante	Joanne Marcoux	Dennis and Linda Moore	Lilly Oslin
Shannon & Greg LaPlante	Stuart Markowitz	Don Geckle and Charlotte	Catherine Palazzi
Corinne Lapointe	Barri Marks	Moore	Jim and Kathy Palma
Jeanne Larsen	Patty & Rich Marshall	Loyda Morales	Emma Palmacci
Peter and Judith Larson	Sharon Marshall	Molly Reynolds & Jim	Shaweta Pandey
Janet and Mark Laukaitis	Jeffrey Martin	Morgan	Sabrina Paradise

Faith Parrish	Mark Raymond	John and Deborah Schmaltz	Barbara Steinfeld
Deborah Van Ohlen & Wendy Payton	Daniel Raymond	Bobbi and Phil Schmidt	Cyndi and Alan Stern
Joan Pazdziora	Richard Rego	Paul and Dawn Schmieder	Eric Stevenson
Mary and Lou Pear	Rebecca Rehel	Jonathan & Sheryl Schreiber	Cornelius Stevenson
William and Agnes Peelle	David & Corinne Renker	Tracey and Sean Scraba	Keith & Catherine Stevenson
Christine Pelfrey	Barbara Retartha	Tim Scull	Roberta Stevenson
Laura Pels	Elizabeth and Isaac Retersdorf	Christine and Robert Scully	Clea Stiscia
Mardelle and David Pena	Carlos Reyes	John Scully	Michael and Carolyn Stockman
Thomas Penna	Keith Rhoden	Josephine Sempere	Martha Stone
Deborah Perry	Benjamin Rhodes	Lisa Sgamboti	Caitlin Stoneham
Susan Peters	Laura and Kevin Rice	Howard & Catherine Shafer	Ronald and Judith Straayer
Beverly Peterson	Marie Richard	Jules and Marcia Shafer	Bruce Stubaus
Jane and Garrett Phelan	Edward and Sharon Richters	Sudhir Shah	Janet Stulting
Mary and Chris Phelan	Annemarie & Rick Riemer	Gordon and Marylou Shand	Vinod Sukhraj
Eric Phelps	Stephen Riley	Daniel and Lynn Sharp	Geraldine and Timothy Sullivan
BradshawPines	Michael & Nancy Rion	Tracy and David Shaw	
Joe Pistritto	Eric Riotte	Barbara A. Shaw	Edward & Kathryn Sullivan
Leah Pitfield	Paul Rivard	Nancy Shaw Kilty	Suzanne Sullivan
Susan Danseyar and Scott Pitman	Paul Rivard	Samuel Shaw-Wilgoski	Marylou Sullivan
Jose and Jessica Planas	Zoe Rivera	Meisha Sherman	Marcie Sullivan
Jose and Ramona Planas	Vanessa and Michael Robb	Tani Siano	Theresa Sutton
Elizabeth Plumley	Connie and Ron Robinson	James and Carol Sicilian	Jennifer Sweet
Laurie Podolak	Frank Rodenberg	Anthony Sidera	Deborah Szajnberg
Raphael Podolsky	Noemi Rodriguez	Thaddeus Sikora	William Tait
George & Margaret Pohorilak	Jaume Rodriguez	Hilary & David Silver	Fiona Tamburini
Bridgeen Policarpio	Rafael Rodriguez Cruz	Judy Silver	Paul and Corinna Tamburini
Natalie & Lee Pollock	Rosemary Rogers	Rosemary Simao	Bonnie Tamburino
Sylvia Nadeau-Poole and George Poole	Kurt Roggendorf	Andrea & David Simmons	Cynthia Taplin
Patricia & David Porteous	Eric and Jane Rosenberg	Philip and Julie Simplicio	Anne Tarryk
Karen Potter	Roberta Roy	Jonisha Sinclair	Jane Hawken & David Taylor
Jessica Pratt	Jon & Viviann Rubin	Christopher Skidmore	Kathryn Taylor
Paul and Julie Prignano	Linda and Edward Ruby	Ellen and Richard Skinner	Allan and Sally Taylor
Edward Clark and Joan Pritchard	Joseph P. Ruddell	Stephanie Slappendel- Modean	Deborah Winsor and Lauren Tellier
MayaProrokovic	Mark Kennedy and Cathy Rude	Diane Smith	Jay Terbush
Frank and Jane Prouty	Lee Russell	Angelic Smith	Linda Ternullo
Kenneth Przybysz	Nancy Ryan	Deb Copes & Steven Smith	Bryan Hooper & Baylah Tessier-Sherman
David Pugliese	Ruth Fitzgerald & David Sage	Paul Broxterman & Laura Soll-Broxterman	Michael Tetreault
Margaret Pulito	Fazelath Saleem Basha	Emily and Norman Sondheimer	Katie Thibault
Teri Bayer and Bruce Putterman	Jodi Salmon	Margaret Sorensen	Brian and Anne Thibeault
Susan Radolf	Diana Salopek	Tonya & Robert Spears	Pamela Thompson
Naomi Rafalowicz	Christie Sanders	Nancy Spencer	Michelle Thompson
Rebecca Rafferty	Sarah Santiago Colon	Linda and Mark Sperry	Melinda Thompson
David Desiderato and Valerie Raggio	EmilyBeth Savage	Paul Spinella	Brian and Amy Thompson
Justine Rakich-Kelly	Holly Schaff	Karen Spring	Alvin and Lesley Thompson
Dorothy Ralston	Cheryl Schatzman	Lindsey Squire	Peter Tiernan
Robert Randich	Annelieke Schauer	Beatrise Srams	Kyle Timins
Stephanie Rauch	Toby Scheel	Leah Staffin Brehm	Melanie & Jonathan Tinkham
	Alison Scherer	Kristina Stasaitis	Phillip and Carrie Titolo
	Mark and Aimee Schissel	Jane & Joe Staszowski	Joseph & Gail Tobin
	Ronald and Judith Schlossberg	Stein Family	James Todd

Wendell and Marsha Tollefson	Eric & Beth Weisel	Adam Dixon	Breakthrough Magnet School - South
Leland Tolo	Sally Weisman	Advancing Connecticut Together	Briana Hildt
Jennica Torres	Kay & Steven Weiss	AdviceOne LLC	Bridge Family Center
Francis Traceski	Pam Welles	Aetna	BrightPath West Hartford on Park Child Care Center
Joan Trammell	Diane Wendorf	Akhil Banavara	Bryce Delvecchio
Phung Trang	Wheatley and Brett Wentzell	Alison Scherer	Camille Rivard
Philip Shreckengast and Ngoc Trang	Melinda & Wayne Westbrook	All Points Technology Corp	Camp Shalom
Bernard Adams & Edna Travis	Paul Weston	Allen Chapel A. M. E. Church	Carla Rae Gunn-Samson
Sally Tresselt	Audrey Weston	Allen Freshler	Carletha Texidor
Joseph and Irene Triampo	Mark & Barbara Wetzel	Alterra Apartments in Rocky Hill	CarMax
Salvatore Tripoli	Bonnie Whelan	American Eagle Financial Credit Union	Carmen Diaz
Thomas and Douglass Trumble	Tracy Whelen	American Flatbread	Carolyn Bighinatti
Chad Trunk	Caroline White	Ana Colliton	Carolyn Zonino
Lili Tucker	Diane and Gary Whitney	Andrea Fleming	Cassandra Graves
Isabel Turmeque	Nancy and Frank Wildt	Andres Torrey	CBRE
Mary Turner-Greer	Bonnie Redderoth & Patrick Wilkinson	Ani's Table	Cecil Hudson
Donald Tutson	Jason Williams	Anna Flores	Central Baptist Church
John Tyner	Mara Williams	Anna Shusterman and Max Michtom	Central Rock Gym
Dawn Tyson	Shontel Williams	Annie Fisher STEM Magnet School	CGI Technologies and Solutions Inc.
LaToya Tyson	Terri Williams	Aria Medical Aesthetics, LLC	Chef Rob Maffucci
Stacey Uccello	Constance Williams	Artie Hill	Chelsea Obomalayat
Rifat and Seema Ulah	Estate of William A. Williams	ASHRAE Connecticut Chapter	Chester & Glenna Brodnicki
Janet Wade-Utay and Arthur Utay	Noreen Wilson	Austin Perkins	Choate Rosemary Hall
Palma Vaccaro	Joe and Susan Wilson	Automated Logic New England	Chris Gann
Sarah Valentine	Harriet Winograd	Avon Prime Meats	Christ Church Cathedral
Jacqueline Valliere	Jeffrey Wolcott	A-Z Design Services	Christ Community Presbyterian
Tyler and Lindsay Van Buren	Luke Wolf	Baggots Family Farm	Christ the King Church
Hope Vath	Nathan Woodberry	Bank of America	Christine Faucher
Joe and Migdalia Ventura	Jeanne Woodcock	Bar Taco	Chuck & Jessica Colliton
Aungkana Vichiendilokkul	Ellen Woodruff	Barcelona West Hartford	Church of the Good Shepherd
Michael Canarie & Lisa Visscher	David Woods	Bean Restaurant Group	Cindi Bates & Jonathan Russell
Gretchen Vivier	Lory Woods	Bernard Manocchio, The Audio Store, Newington, CT	Colin Howard
Bob and Rosie Vojtek	Jyoti Yoddha	Beth and Phil Ferrari	Comprehensive Dental
Pamela and Gary Vollinger	Kelvin Young	Beverly and Mike Morris	Connecticut Academy of PAs (Conn APA)
David and Nancy Wadhams	Jane & William Youngstrom	Beverly Peterson	Connecticut Beer Tours
Frederick and Selby Wajcs	Lee Young-Sup	BG Dining	Connecticut Foodshare
Jean Walker	Robert and Anne Yurch	Bloomfield Public Schools	Connecticut Harm Reduction Alliance (CTHRA)
Nancy Wallach	Lois Arsenault & Jon Zappulla	Bloomfield Social & Youth Service (BPDY Group)	Connecticut Science Center
Amy Walsh	Cathy Zeiner	Bloomfield Tennis Club	Conning
Carol Walter	Shuai Zhang	Bob and Rosie Vojtek	Costco
Kristen Walter	John & Judy Zinn	Body Talk Boutique	Coursey & Company
Michael and Linda Walton	Edward and Kay Zito	Boqueria Restaurant	Covent Bridge Group
Greg Ward	Margaret Zorn	Boy Scout Troop 156	Covr Financial Technologies
Stephen & Maria Ward	Joseph Zott		CREC
Sharon & Dave Ware	Inkind Donors		
Sarah Webb	103rd Security Forces Squadron National Guard		
Tina Weiner	Abigail Mayr		
	Act Foundation USA Inc.		
	Actup Theater		

CREC Montessori Magnet School	Fleet Feet	Iris Photography	Kimberly Boutique
CT Army National Guard	Flower Power Farm	Ivoryton Playhouse	Knox, Inc.
CT Science Center	FML CPAs	Jacobs Vehicle Systems	Lake Compounce
CT Youth Excellance Project (YEP)	Food Explorers, LLC	Jaida Foster	Laura Dickson
CTECS	Foxwoods Resort & Casino	Jane Lennox	Laura Friday
Cynthia Peoples-Hobson	Frank and Janet Lambert	Janet Chornyak	Laura Pels
David Feder	Franny Reynolds	Janet Jones Bann - Words for a BetterWorld Editing & Coaching Services	LAZ Parking
David Lewis and Donna Manocchio	Garelick Fams Dairy Farmers of America	Janhavi Verma	Le Mazet
Dawnmarie Amaro	Gaspero Cemacho	Janice Beauregard	Levo International
DCAA	Gavadier Cruz	Janine Belsky	Libia Yanez
Debbie Lewis	Gengras Center	Jasdeep Singh	Lifer Fitness Studio
Department of Children and Families	Girls On The Run Greater Hartford	Jeanna Grimes Ogbar	Linda Blechman
Diane Braunschweiger	Glorimar Maurces	Jeff Ward	Linda Eumenidi
Diane Green	Gouveia Vineyards	Jeri Erman	Linda Frankl
Diane Woodward	Grace Academy	Jill and Jeremy Grieveson	Linh Duong
Dianne and Jonathan Ney	Granite City Electric	Joanna Eickenhorst	Lisa & Matt Cameron
Dixon Orthodontics	Greater Hartford Association of Realtors	Joanne Oliver	Lisa Cameron
Dollar Tree Distribution Center	Greg, Ruth & Sara Curtin	Johanna Marin	Lisa Cozzi Real Estate Team at Berkshire Hathaway
Donessia Harris	Groomingdale's	John Barry & Tammy Brayton	Lisa Ortiz
Donna Peatfield	Gwendolyn Boykin	John Buck	Long Wharf Theatre
Donna Peetfield	Handmaidens Ministries Inc	John Maloney	Loomis Chaffee Parents Association
Donna Sodipo	Hands On Hartford Board of Directors	Jonathan Russell and Cindi Bates	Love It Vegan
DoorDash	Hanover Insurance Group Foundation	Jose and Ramona Planas	LTi Mindtree
Doro Restaurant Group	Hartford 21	Jose Luna	Luna Piercing & Fine Jewelry
Ellen and William O'Connor	Hartford Athletic	Joseph Battaglia	Lux Bond & Green
Elmwood Senior Center	Hartford Flavor Company	Joshua Ellison	Luz Texidor & Yaziel Ramos
Elsie Ramos	Hartford HealthCare	Joshualyn Rivera Vargas	Maeve Howard
Emanuel Lutheran Church	Hartford Healthcare Neighborhood Health Team	Josie Santostefano	Mandell Jewish Community Center
Emily Lopez Santa	Hartford Hospital	Journey Home	Margaret Fiore and Steven Fischer
Enid Corash Mikulski & Michael Mikulski	Hartford Wolf Pack	JT Connect	Margaret Moriarty
Eric & Beth Weisel	Hartford Yard Goats	Judith Mulkern	Maria Reyes
Essex Steam Train and Riverboat	Harvey & Lewis Opticians	Junior Achievement of Southwest New England	Mark Schpero
Evelyn Plaza	Heads Up! Hartford	Kaeser & Blair, Inc.	Market Place- Avon
Fernwood Estates	Healthy is the Way	Karissa Vincent	Mary Beth & Bob Cardin
Fire by Forge	Heather Rackliffe	Kathleen Melillo	Mary Beth & Robert Cardin
Fire x Forge	Heidi Sandling	Katie Wickham	Mary Kay Brophy
First Cathedral Church	Helen & Henry Frye	Kayla Startz	Matterhorn Mini Golf
First Church in Windsor, UCC	Hill Stead Museum	Kehilat Chaverim of Greater Hartford	Max Hospitality
First Church of Christ Congregational 1652	Hilton Garden Inn Glastonbury	Keith Darin	MCM Fundraising
First Church of Christ Congregational in Glastonbury	Home Depot - West Hartford	Kelly Dougherty	Meghan Howard
First Presbyterian Church	Hope Vath	Kendra Scott	Megyn Craine
Fitness With Jonathan	Immanuel Congregational Church	Keturah & Daniel Kinch	Melissa Allard
	Intuitive Touch Massage Therapy	Kevin Eagan	Michael McGillicuddy
		Kevin Fagan	Michael Tetreault
		Kevin Song	Michael Walsh
		Khadijah Allen	Michelle Pellin
		Kian O'Connor	Millwright's Restaurant
			Molly Sullivan
			Mystic Aquarium

NAAIA
 Nadia Sims
 Nancy Dart
 Nassau Financial Group
 Nat Wyse
 Natalie & Lee Pollock
 National Charity League: CT
 Mountain Laurels
 Nayda Garcia
 Nevins Law Group
 Newington High School
 Newport Mansions
 Ngoc Trang and Phil
 Shreckengast
 Nhung Nguyen
 Nicole and Brian Faynor
 Nilda Collaro
 Noci Gelato/Lenoci's Kitchen
 North American Association
 of Muslims
 Northwest Catholic High
 School
 Nurturing Hands
 Oliver Ellsworth
 Olsen Construction
 Omega Psi Phi Fraternity
 Inc.
 Optum Northern CT House
 Calls Team
 Oscar Zelaya
 Pam Alston
 Pamela Skerker
 Pandora Jewelers
 Patricia Colla
 Peggy Lorence
 Penwood Real Estate
 Investments
 Penzeys Spices
 Percil
 Phineas Swann Inn & Spa
 Physical Therapy & Sports
 Medicine Center
 Playhouse Theatre
 Posh Paint
 Pratima Singh
 Propark Mobility
 Rafael Rodriguez Cruz
 Ramboll
 Raymond DeJesus
 Raytheon Technologies
 RBC Wealth Management
 Red Thread
 Reyaan Chaudhury
 Richard Stillson

Riverfront Recapture
 Riverpoint on the
 Connecticut
 Robin Cohen
 Robinson & Cole, LLP
 Robyn Sondak
 Rocky Hill Congregational
 Church
 Ryan Jespersen
 Sabrina Lipton
 Sacred Cocoon
 Salute
 Sandra Russell-Gray
 Saybrook Hotel & Marina
 Scott Tardif
 Selective Insurance
 Serena Thaker
 SFX Preferred Resorts,
 Hancock, MA
 Sharon and Dave Ware
 Sisters of Mercy of
 Connecticut, Inc.
 Smith Middle School
 South Congregational
 Church EH
 South Windsor High School
 Southern New England
 Ministry Network
 Sr. Beth Fischer
 SS. Isidore and Maria Parish
 St. Alban's Episcopal Church
 St. James' Episcopal Church
 St. Mary St. Patrick Church
 St. Patrick - St. Anthony
 Church
 St. Peter Claver Roman
 Catholic Church
 St. Thomas The Apostle
 Catholic Church
 Stacy Cloud
 Stanley Black & Decker
 Stephanie Anton Bernard
 Stephen and Maria Ward
 Stephen Tessier
 Stop & Shop
 Swift Textile Metalizing LLC
 Tannery
 Tell Me Another Stories
 The Bushnell
 The Cheesecake Factory
 The Dylan Hotel - NYC
 The Hartford
 The Place 2 Be Restaurant
 The Pond House Cafe

The Preservation Society of
 Newport County
 The Simsbury Inn
 Theater Works Hartford
 TheaterWorks
 Tim Howard & Maureen
 Johnson
 TME Fitness Solutions LLC
 Total Wine & More
 Tracey Stephenson
 Trantolo & Trantolo, LLC
 Travelers
 Trina Williams
 Trinity College
 Trinity Episcopal Church of
 Wethersfield
 Tri-State Equipment
 UConn Dept Public Health
 Sciences
 Umrani and Pooram Singh
 United Sewing and Design
 LLC
 University of Connecticut
 Medical School
 University of Hartford
 University of Saint Joseph
 University of Saint Joseph
 CE & Spiritual Life
 University of Saint Joseph
 PA Program
 Valerie Bryan
 Vidyuth Srikanth
 Vinod Sukhraj
 Virtus Investment Partners,
 Inc
 Vista Del Mar Charters
 Vox Church
 Wadsworth Atheneum
 Wadsworth Athenium
 Webster Bank
 West Indian Social Club
 Wethersfield Public Library
 Whole Health Wellness
 Center
 Wild Fork
 Will Evans Kind Folk Fan
 Group
 William Lewis
 Yahaida Planas
 Yasvanth Pamidi
 You Give Goods LLC
 Youthful Images/Patrick
 Felice, MD
 Yvette Williams
 Zayas Law Firm

**In memory of Alvin
 Burgher, Jr.**
 Paul Hartung

**In memory of Rev. Paul
 Douglas Bobbitt**
 Richard Matteson
 Donald Tutson
 Robert Hugh
 Efrain & Olga Agosto
 Toby Bobbitt
 Lois Arsenault & Jon
 Zappulla
 Deborah Van Ohlen &
 Wendy Payton
 Paul Weston
 William & Linda McKinney
 Herbert Emanuelson
 David Lewis & Donna
 Manocchio
 Nancy Luce
 Lili Tucker
 Andrew Kulak
 Tina Bobbitt
 Roberta Roy
 Kelly Family Foundation
 Audrey Weston
 Ellen Eisenberg
 Linda & Mark Sperry
 Miles Wickless & Lori
 Beste
 Marla Killough
 Barbara A. Shaw
 Erick Block & Stacey
 Bobbitt

**In memory of Mike
 Bombara**
 South Windsor High
 School

In memory of Paul Christie
 Paul Hartung
 Kysa Christie
 Terence Donovan
 Cara Christie & Jar
 Lampard

In memory of Tim Cole
 Margaret Zorn

**In memory of James
 Christopher Conrad**
 Mark Conrad

GIFTS IN LOVING MEMORY

In memory of Jonathan
 Judith & Allen Kronick

**In memory of Wenona
Crooks-Tedeschi**
Teresa Duggan

**In memory of Kathleen
Hovey Davidson**
Robert & Rebecca
Henricks
Josephine Sempere
Marlene Gordon
Laura & Dean Nichols
Bill & Char Kennedy
Samuel & Barbara Billings
Elizabeth Johnson
Marie Richard
Dean & Kathleen Bolt
Alvin & Lesley Thompson
Peter Tiernan
Robert & Judith McGowan
Mary Lou O'Connor
Mark Kennedy & Cathy
Rude
Evantash Family
Charitable Trust
Margaret & Graham Heller
Marshall & Sharan Hovey
Wendell & Marsha
Tollefson
Beth & Drew O'Connor
Dennis & Linda Moore
Denise Chicoine & Trinity
Friends of Sue Talbott
Diana Salopek
Kristen Walter
Laurie Curran
Marie Dempsey
Donna Morrison
Stephen Campbell

**In memory of Kathleen M.
Goman**
James Gorman

**In memory of William
Hoddinott**
Bonnie Hoddinott

In memory of David S. King
William & Linda McKinney

In memory of Don Labins
Paige Adams

**In memory of Theresa
Larsen**
Eva Csejtey

**In memory of Albert J.
Lebrun, Jr.**
Mary Burkhardt

**In memory of Mary Fran
Libassi**
Jay & Diana Krusell

**In memory of Lois &
Edward Maxwell**
Danielle Maxwell

**In memory of Deborah Nye
-Corgan**
Rev. John Corgan

**In memory of Brian A.
Pulito**
Margaret Pulito

**In memory of Robert
Vernlund**
Nellie Filippopoulos

GIFTS TO HONOR

**In honor of Elizabeth
Andrews**
Gregory Andrews

**In honor of Laura & Seth
Baker**
John Memmott
Sarah Cruz

**In honor of Katy O'Leary
Bannister**
Colin Bannister

In honor of Cindi Bates
Wanda Bates
Lee Russell
Anonymous

**In honor of Laura & Mark
Beall & Family**
Charlotte & Dave Kaetzel

**In honor of Licia & Mason
Beekley**
Lorie Beekley

In honor of Jane Bermudez
Sister Beth Fischer

**In honor of Veronica
Brooks-Sigler**
Meghan Hayden

In honor of Laura E. Bujold
Richard & Karen Kubica

In honor of Molly Churchill
Wendy Furniss

**In honor of Drew Doyle &
Family**
Sarah Matusek

**In honor of Marian
Edmonds**
Richard & Arline Edmonds

**In honor of Missy & Peter
Ferris**
Jim Lindberg

**In honor of Sister Beth
Fischer**
Ken & Beverly Badini

**In honor of Jessica Fritz-
Peters**
Barri Marks

In honor of Pete Gerardi
Ronit Bendett

In honor of Paul Han
Holta Han

**In honor of the Hands On
Hartford Board**
Barbara A. Shaw

**In honor of Charles Harrill
& Stuart Younse**
Stephanie Rauch

**In honor of James & Lois
Harris**
Sharon Bergman
Peter & Jennifer Harris

**In honor of The Hands On
Hartford Staff**
Ann Thomas & Michael
Bonzagni

**In honor of Kenzi
Jacobson**
Heather Jacobson

**In honor of Emily Kaas-
Mansfield**
Glenn Kaas & Carolyn
Wilkes Kaas

**In honor of Beth
Kenworthy & Peter Fraser**
Michael Brooks
Robyn Bruhin
Rosemarie & Peter
Montagino
Stuart Markowitz
Mara Williams
Patricia Christopher
Dala Grabowski
Kim Babins
Holly Schaff

**In honor of David Krol &
Family**

Joseph & Gail Tobin
**In honor of Sister Lorraine
La Vigne**
Joseph & Irene Triompo
Sheryll Bedingfield

In honor of Marcia Lada
Mara Dresner

In honor of Jane Lennox
Mark Lennox
Barbara Steinfeld

**In honor of Laura
Lockwood**
Leah Staffin Brehm

**In honor of Paul & Michele
Lombardo**
Mara Dresner

In honor of Diane Lopes
Tonya Burke Rodriguez

**In honor of Geoff
Luxenberg**
Paula Luxenberg

In honor of Rob Maffucci
Michael & Nancy Rion

In honor of Margo Maine & George Coppolo
Gerry Maine & Linda Burns

In honor of Joseph McEnroe
Colin McEnroe

In honor of Keith McGilvery
Patricia Morris

In honor of Johanna Morrison
Stephanie Rauch

In honor of Brian & Alexandra Nordstrom
Stephen & Maria Ward

In honor of Jaime Ortega
John Emery Istvan

In honor of Jane Phelan
Andrew Greenhalgh & Madeleine Hexter

In honor of Dianne Rechel
Victoria Carmona

In honor of Colin Reece
Diane Benner

In honor of Mary Lou Reilly
David Lewis & Donna Manocchio

In honor of Molly Reynolds
David Knishkow

In honor of Keith Rhoden
Paul & Corinna Tamburini

In honor of Becky Rizoli
Lis Book

In honor of Hyla Rubin
Teresa Duggan

In honor of Bobbi & Phil Schmidt
Charlotte Goode

In honor of Bobbi Schmidt
Kenneth & Kathie Goode

In honor of Barbara A. Shaw
John Merz
Annemarie & Rick Riemer
Brian & Lisa Neary
Chester & Glenna Brodnicki
Dectora Jeffers
Richard Allen
Lois Arsenault & Jon Zappulla
Tonya & Robert Spears
Stephen & Maria Ward
Michael & Nancy Rion
Allan & Sally Taylor
Sr. Beth Fischer
Matthew Pellowski & Michelle Jarvis
John & Kimberly Cardone
Tom & Jeanne Bright
Barbara & Ray Andrews
David & Nancy Wadhams
Mary Burkhardt

In honor of Barbara A. Shaw, Cindi Bates & Bobbi Schmidt
Priya Morganstern

In honor of Barbara A. Shaw & Pamela Fitzgerald
Edward & Kathryn Sullivan

In honor of Daniel Ustach
Richard & Arline Edmonds

In honor of David Wadhams
Donna Donegan

In honor of Stephen & Maria Ward
Greg Ward

In honor of Bill & Sue Wamer-Prouty
Frank & Jane Prouty

In honor of Linda Wayman
Jay Baker
Sally Tresselt
Karen Denowitz

We make every effort to ensure the completeness and accuracy of these lists. We apologize for any mistakes, misspellings, or omissions and ask that you contact Kate Shafer at 860-706-1505 to correct any inaccuracies.

Hands

Caring in Action HARTFORD

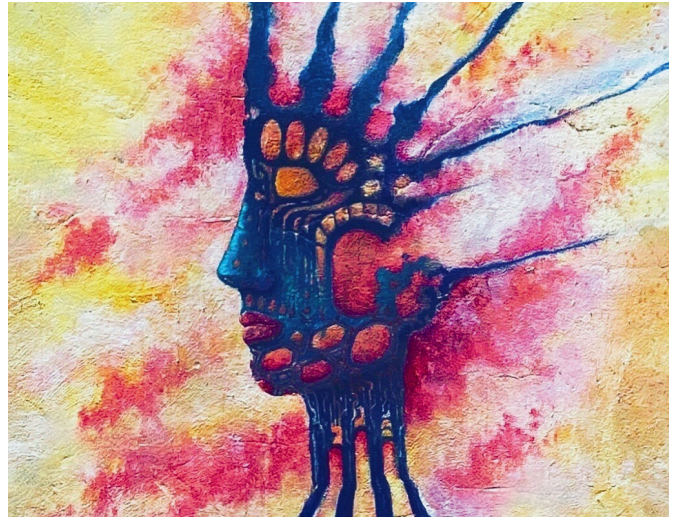


2024's Hands and Hearts Together Event was a memorable evening of celebration and transition. We honored the remarkable legacy of Barbara A. Shaw as she retired from her role as Executive Director, and warmly welcomed Janet P. Bermudez as she steps into this leadership position. It was a night filled with gratitude, hope, and shared commitment to our mission.



Gather55

NOURISH • CONNECT • GIVE



"What a great way to give back to our community through the power of food. The Gather55 team of volunteers, chefs, and workers ARE truly special."

- Reneé Touponce, Chef/Owner
Gather55 March 2024 Guest Chef
of The Port of Call & Oyster Club



WAYS TO GET INVOLVED AT HANDS ON HARTFORD

Make a Donation

To make a donation online:

- Visit handsonhartford.org
- Or scan the QR code below:



Checks may be mailed to:

55 Bartholomew Ave, Hartford, CT 06106

Dine at Gather55

Breakfast/Lunch (Mon-Thurs, 9am-2pm)

Our restaurant is open to all, regardless of ability to pay

Dinner (Wed-Sat, 5pm-8pm)

Fine dining with a menu created by rotating monthly guest chefs. Reservations encouraged through Open Table.



Host a Food Drive

Downloadable food drive flyers can be found by visiting our website, handsonhartford.org/support

Donations are accepted Monday-Friday 9am-4:30pm. Please notify us ahead of time by calling 860-728-3201.

Volunteer With Us

Our work wouldn't be possible without the support of dedicated volunteers.

To learn more about volunteering, please:

- Visit: handsonhartford.org/volunteer
- Email: volunteering@handsonhartford.org
- Call: (860) 706-1522


WE HOPE TO SEE YOU SOON!

55 Bartholomew Ave
Hartford, CT 06106

(860) 728-3201
handsonhartford.org



 55 Bartholomew Ave
Hartford CT, 06106

 (860) 728-3201

 info@handsonhartford.org

 handsonhartford.org

   [@handsonhartford](https://www.instagram.com/handsonhartford)

**SCAN THE CODE
BELOW TO MAKE A
DONATION:**

